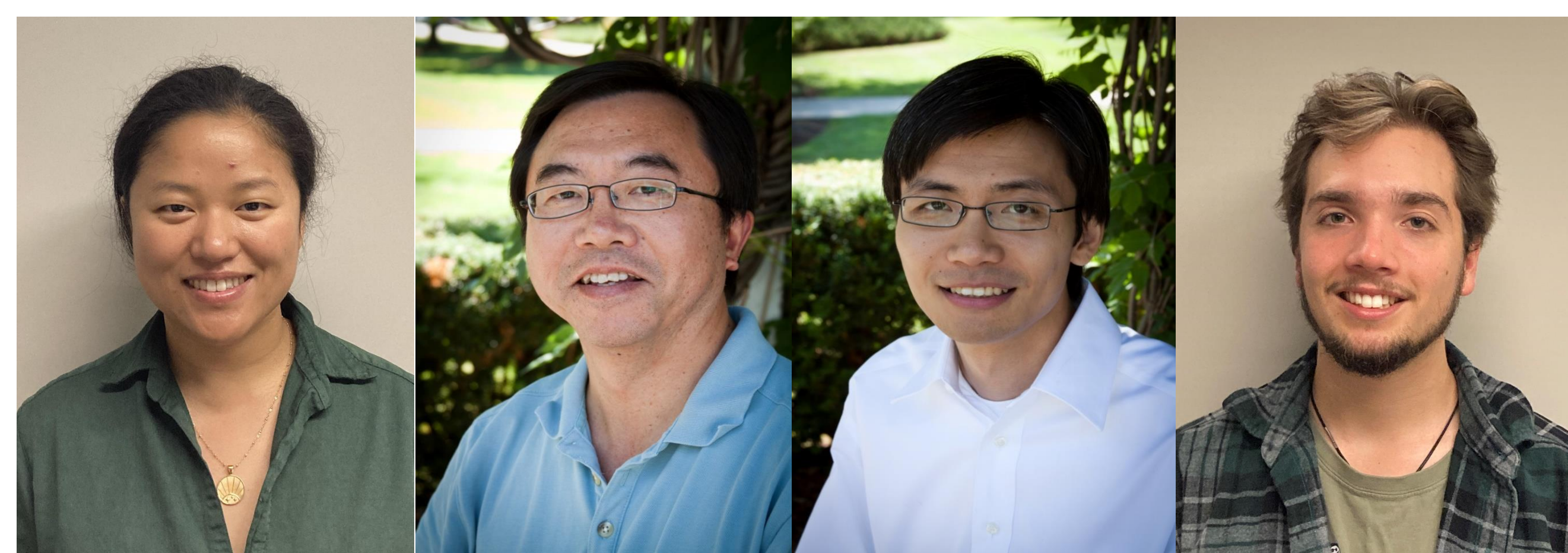


Mission

- Establish a central resource of proteomics technologies
- Establish a highly efficient **research** and **educational** environment

Personnel

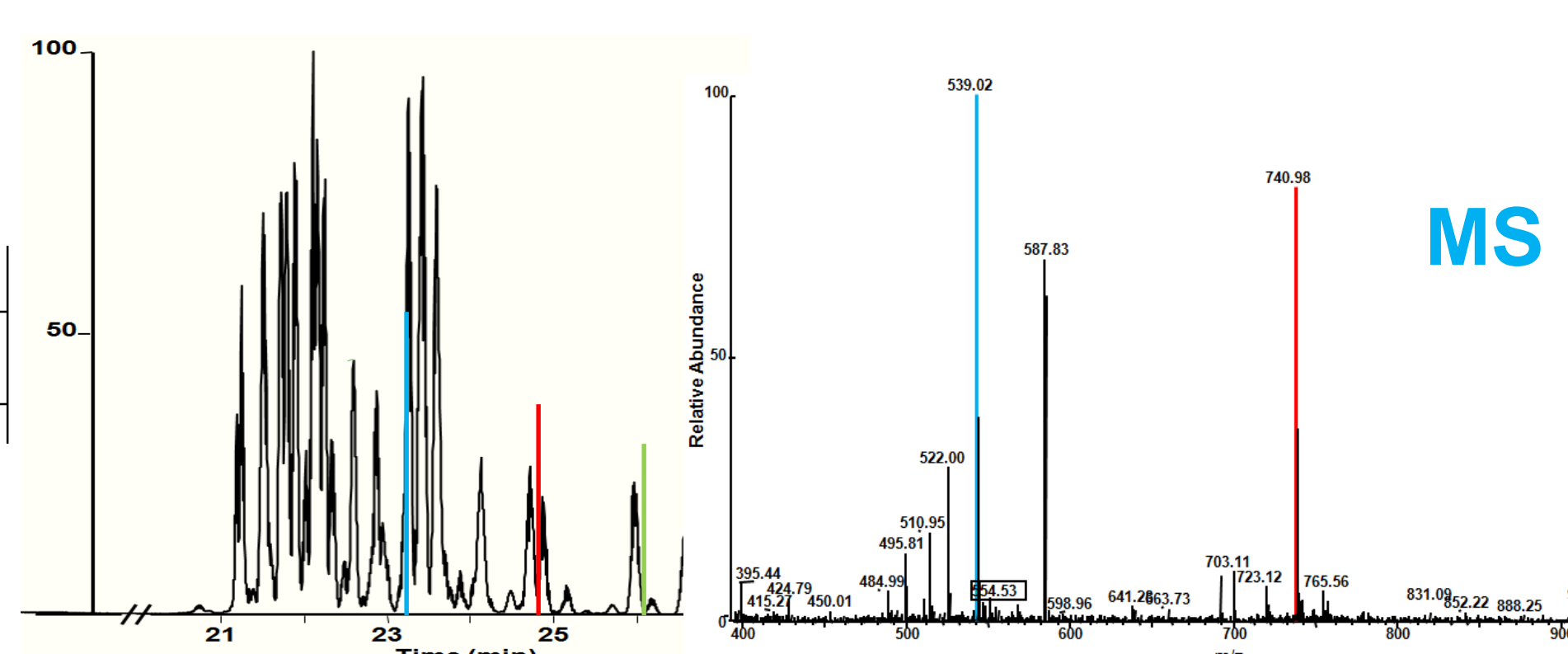
Cohn-Guthrie, Sydney
Sydney.Cohn-Guthrie@uvm.edu
Deng, Bin
deng@uvm.edu
Lam, Wai
ylam@uvm.edu
Leon, Lucas



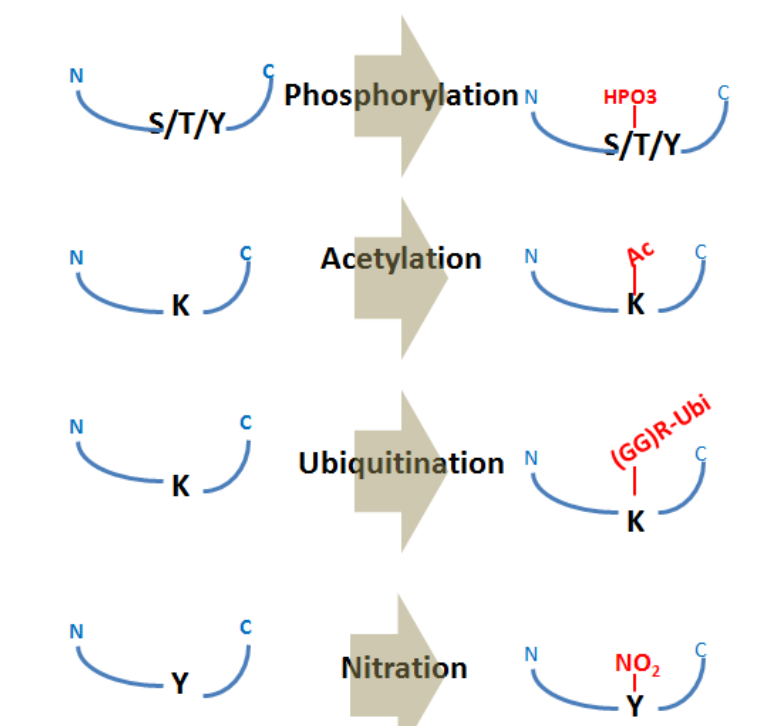
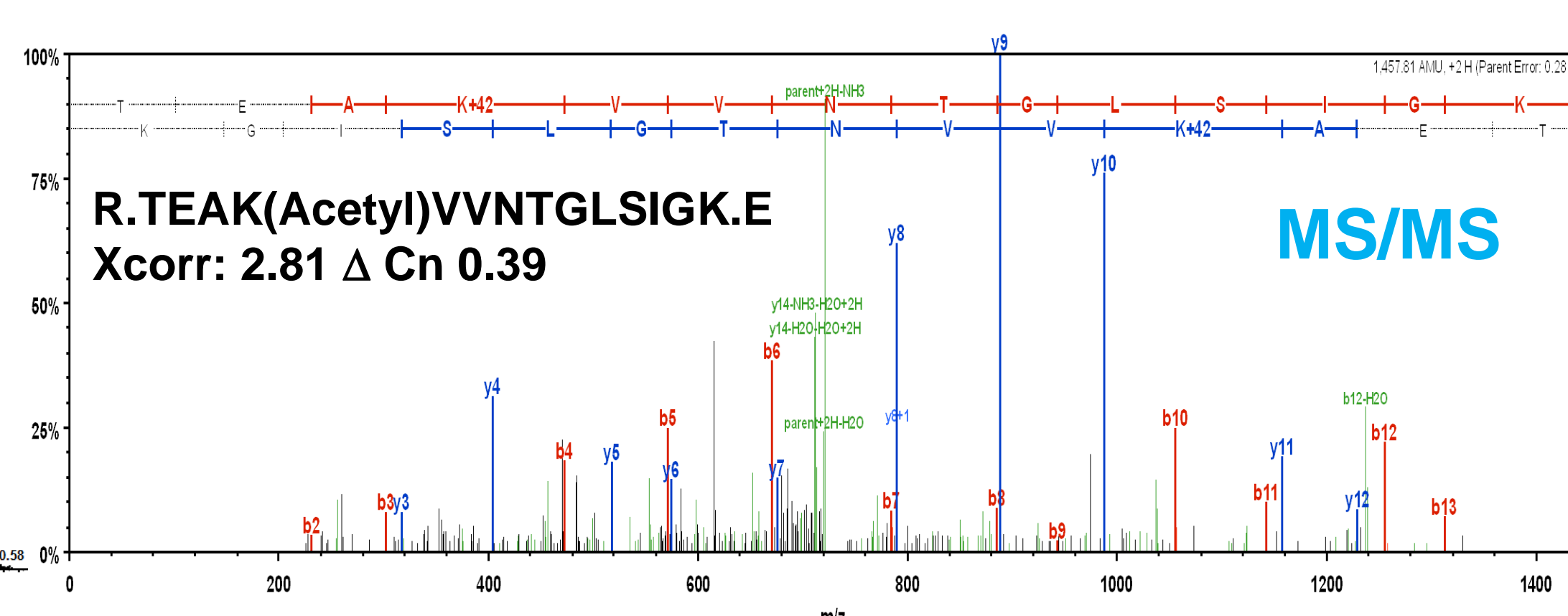
Expertise



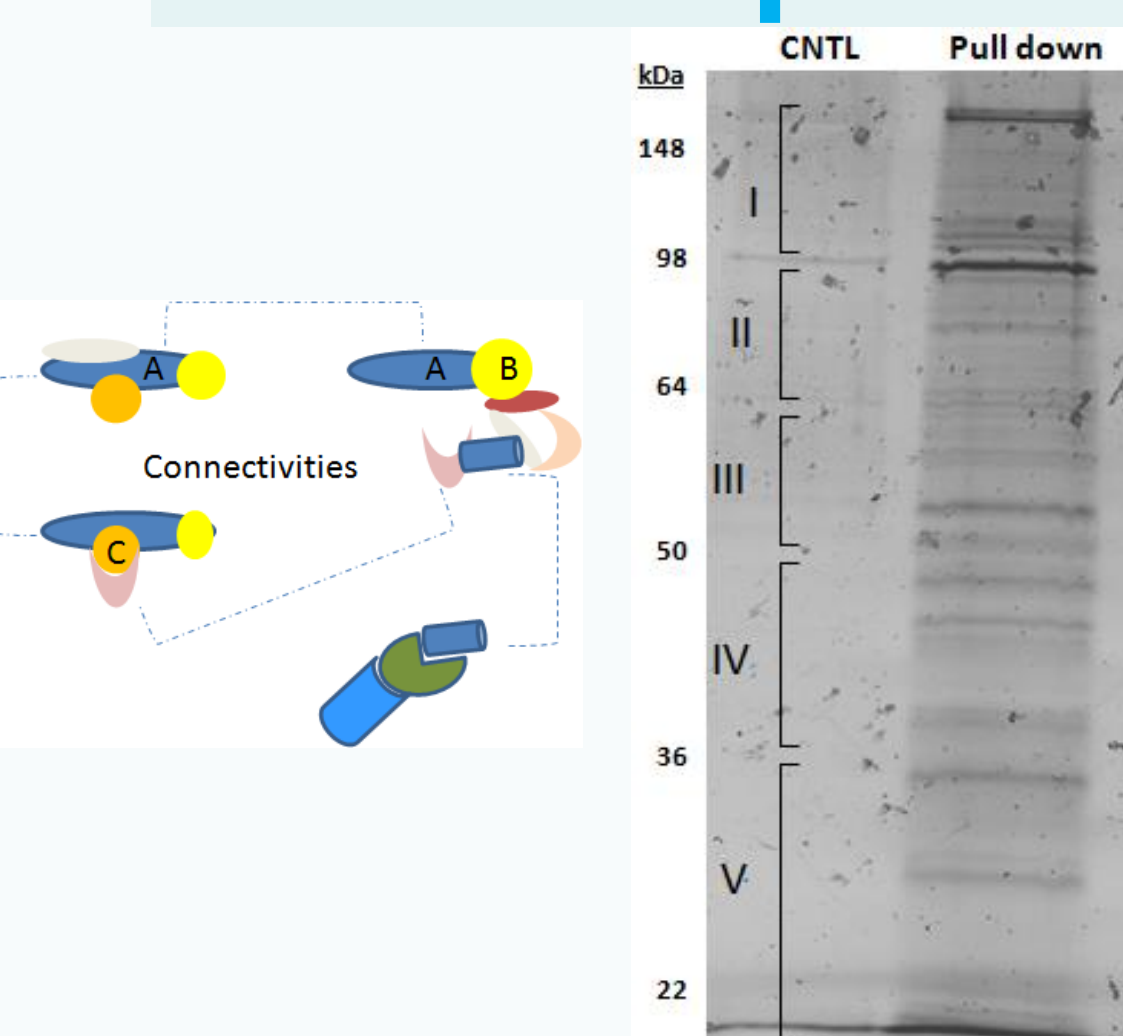
Enzyme digest
~2 kV
500 nL/min



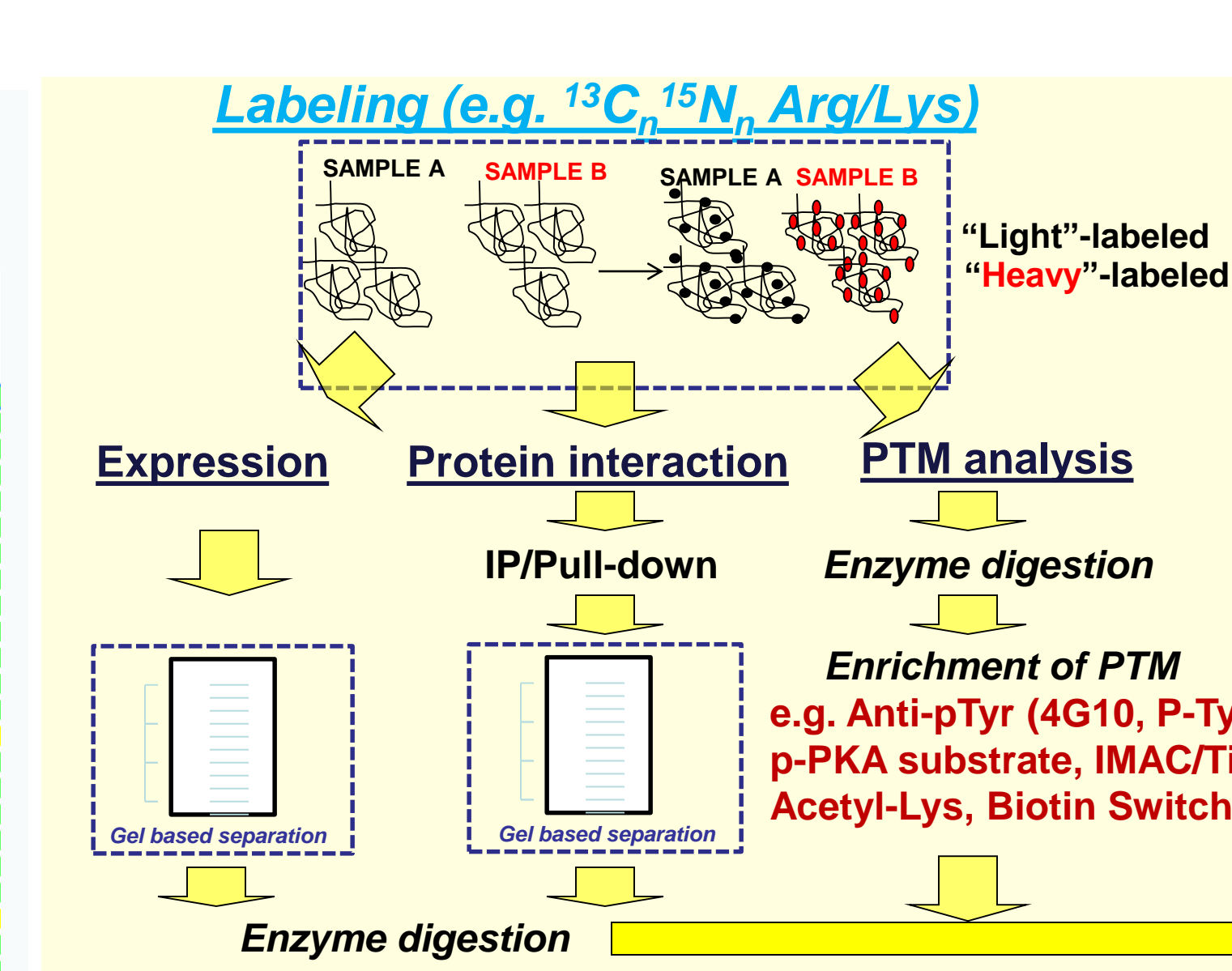
Post-translational modification analysis



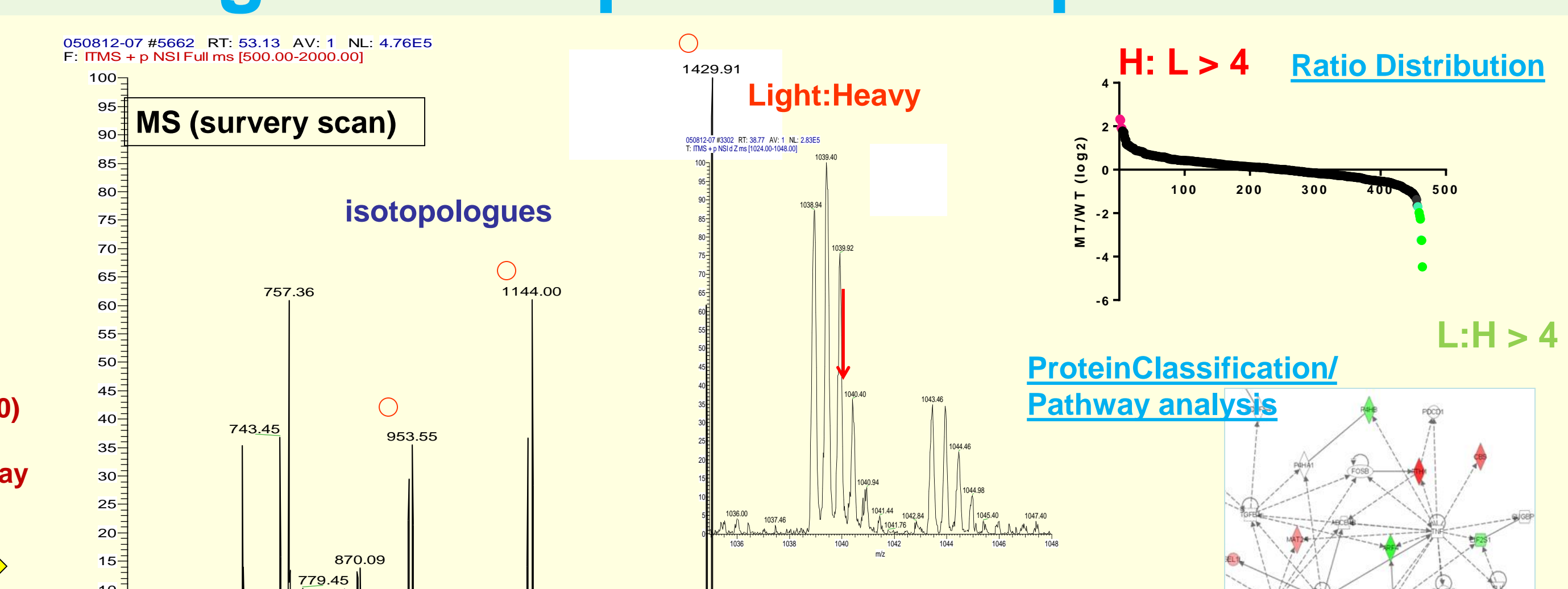
Protein-protein interaction



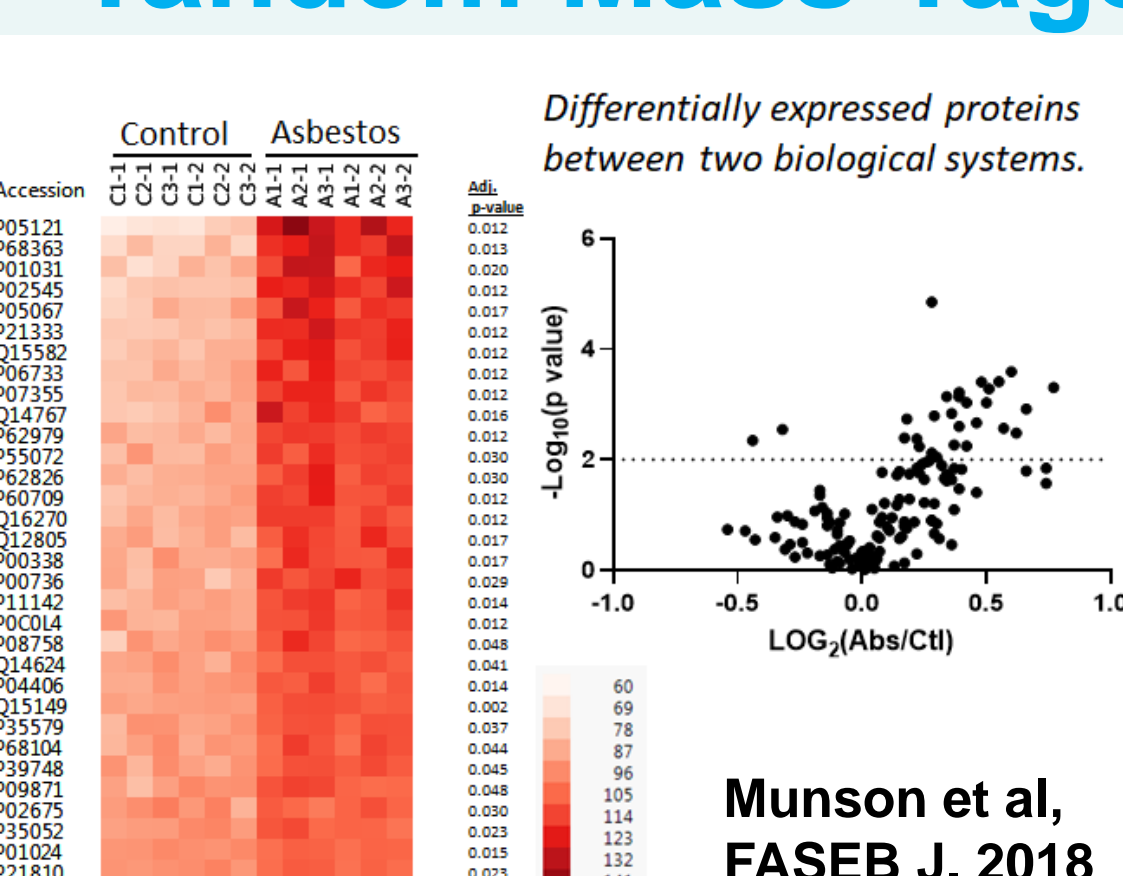
#	Protein Name	Accession No.	Protein Length	Protein Weight	Protein pI	Protein MW	Protein pI	Protein MW
1	Keratin, type II cytoskeletal 1	SP100203227	66 kDa	72.0	5.4	72.0	5.4	72.0
2	Keratin, type I cytoskeletal 10	SP100098645	59 kDa	25	5.2	59.0	5.2	59.0
3	Keratin, type I cytoskeletal 9	SP100181559	62 kDa	120	5.2	62.0	5.2	62.0
4	Keratin, type II cytoskeletal 2	SP100021304	66 kDa	10	5.2	66.0	5.2	66.0
5	SP100000000	SP100000000	62 kDa	62	5.2	62.0	5.2	62.0
6	60 kDa heat shock protein, mito...	SP100178154	61 kDa	61	5.2	61.0	5.2	61.0
7	Keratin, type II cytoskeletal 5	SP100098667	62 kDa	2	5.2	62.0	5.2	62.0
8	Keratin, type II cytoskeletal 75	SP100098589	60 kDa	2	5.2	60.0	5.2	60.0
9	Uncharacterized protein	SP100024344	72 kDa	14	5.2	72.0	5.2	72.0
10	SESPINE1 mRNA binding protein L	SP100410693	51 kDa	8	5.2	51.0	5.2	51.0
11	SERPINE1	SP100228944	58 kDa	38	5.2	58.0	5.2	58.0
12	Serpin H1 of Pyruvate kinase	SP100297779	57 kDa	1	5.2	57.0	5.2	57.0
13	T-complex protein 1 subunit beta	SP100045550	35 kDa	1	5.2	35.0	5.2	35.0
14	Homocysteine	SP100298225	322 kDa	1	5.2	322.0	5.2	322.0
15	Keratin, type II cytoskeletal 68	SP100293665	60 kDa	2	5.2	60.0	5.2	60.0
16	Glucose-6-phosphate isomerase	SP100027497	63 kDa	2	5.2	63.0	5.2	63.0
17	T-complex protein 1 subunit eta	SP100181665	59 kDa	2	5.2	59.0	5.2	59.0
18	Uncharacterized protein	SP100166788	37 kDa	2	5.2	37.0	5.2	37.0
19	T-complex protein 1 subunit delta	SP100202327	58 kDa	2	5.2	58.0	5.2	58.0
20	Uncharacterized protein	SP100010720	60 kDa	2	5.2	60.0	5.2	60.0
21	Keratin, type I cytoskeletal 16	SP100217963	51 kDa	2	5.2	51.0	5.2	51.0



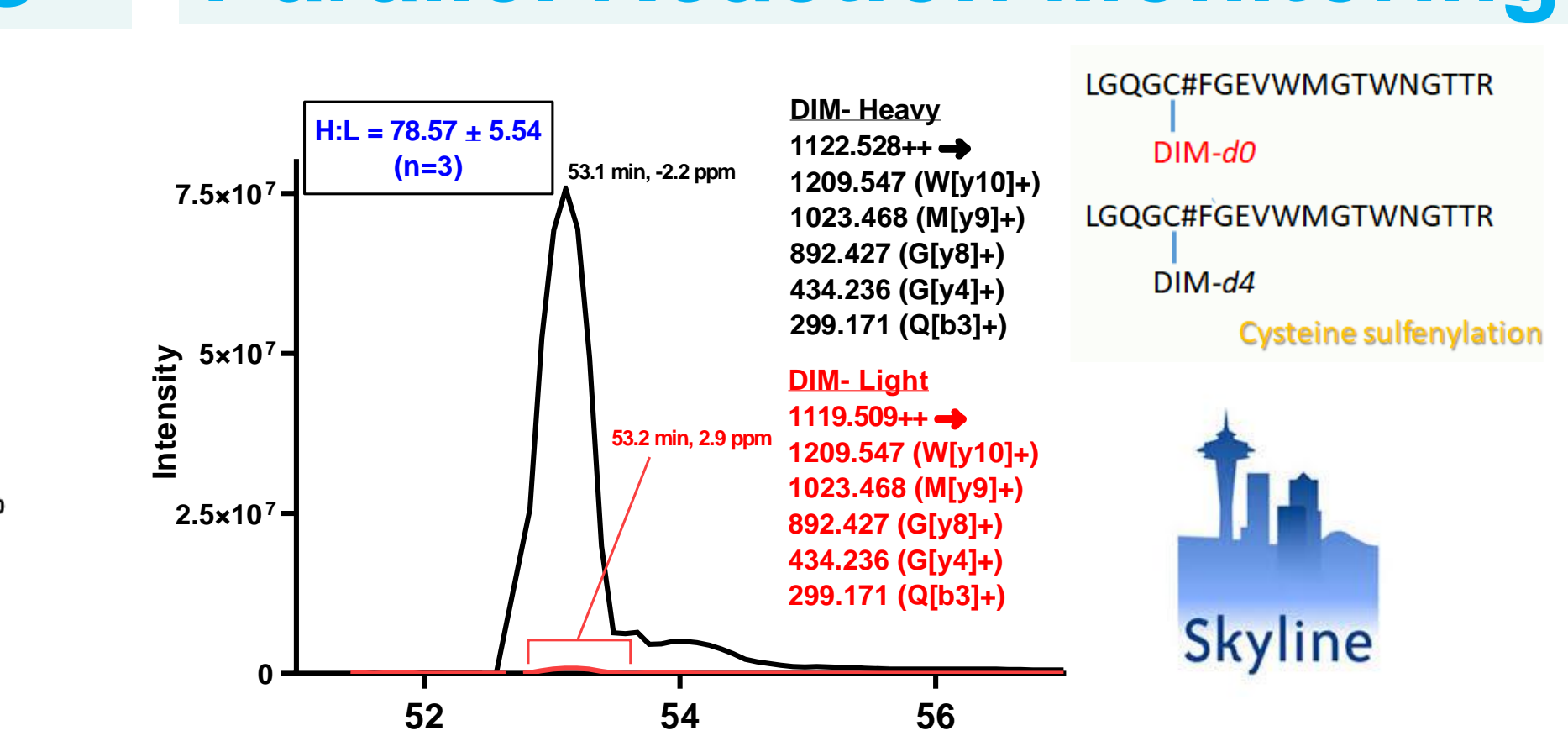
Large-scale quantitative proteomics



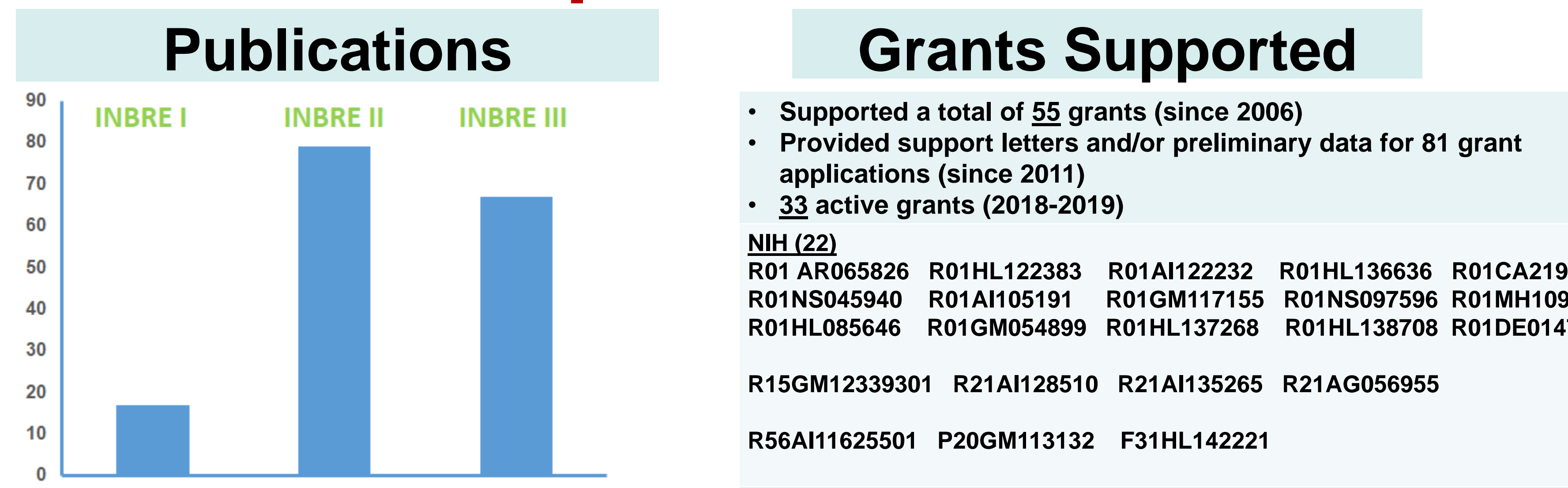
Tandem Mass Tags



Parallel Reaction Monitoring

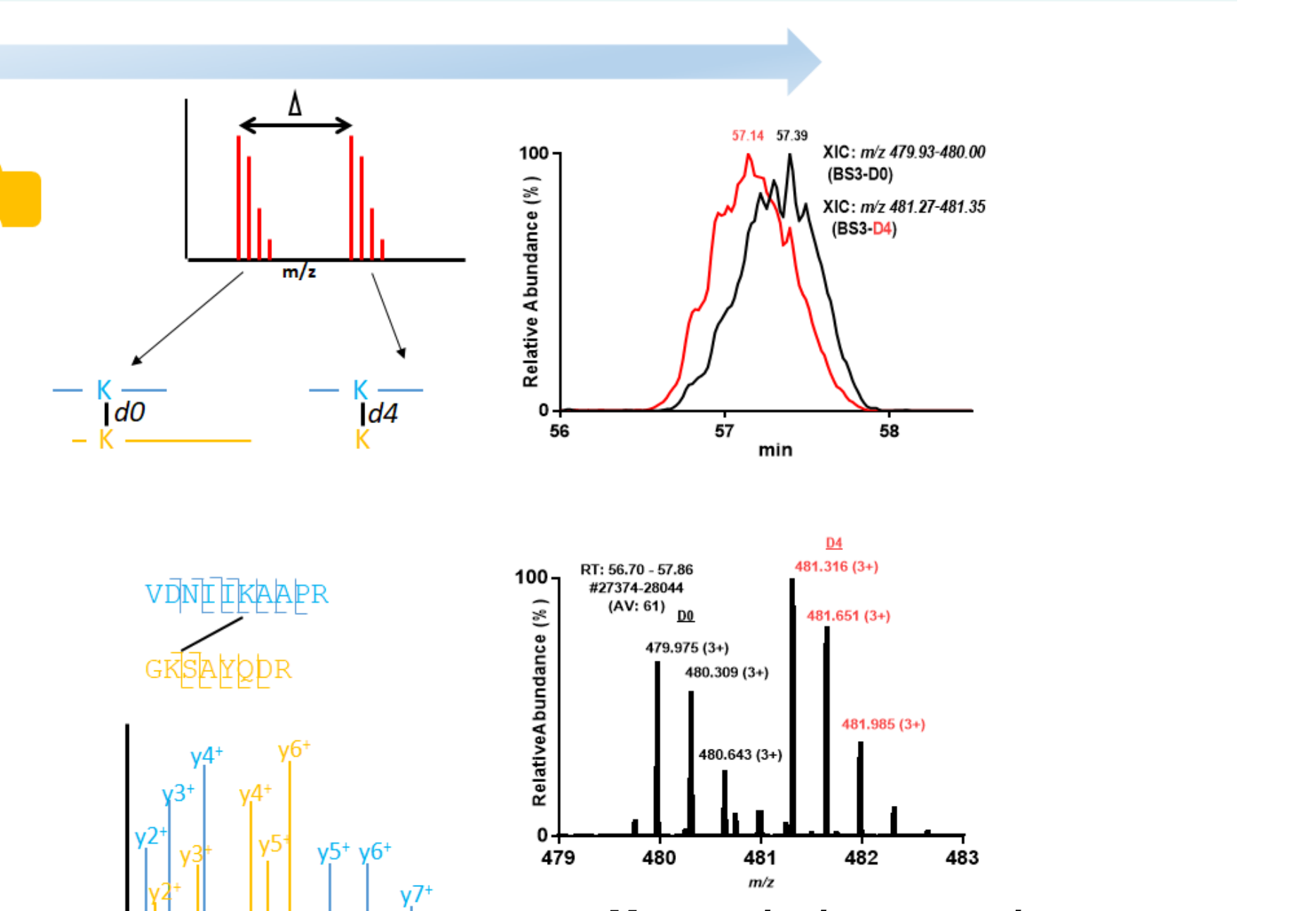


Impact/Outcome Data



Structural proteomics

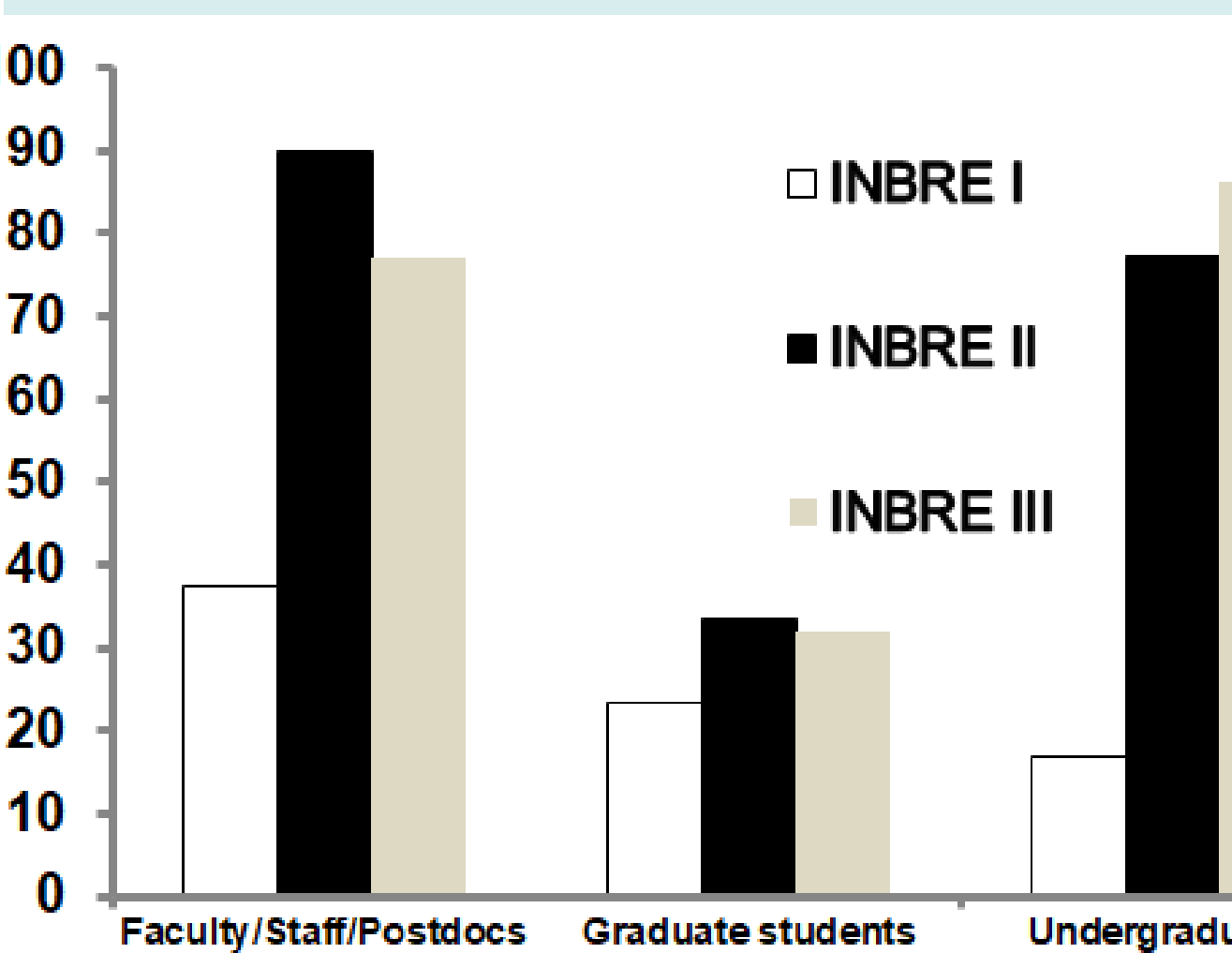
Stable isotope-based cross-linking



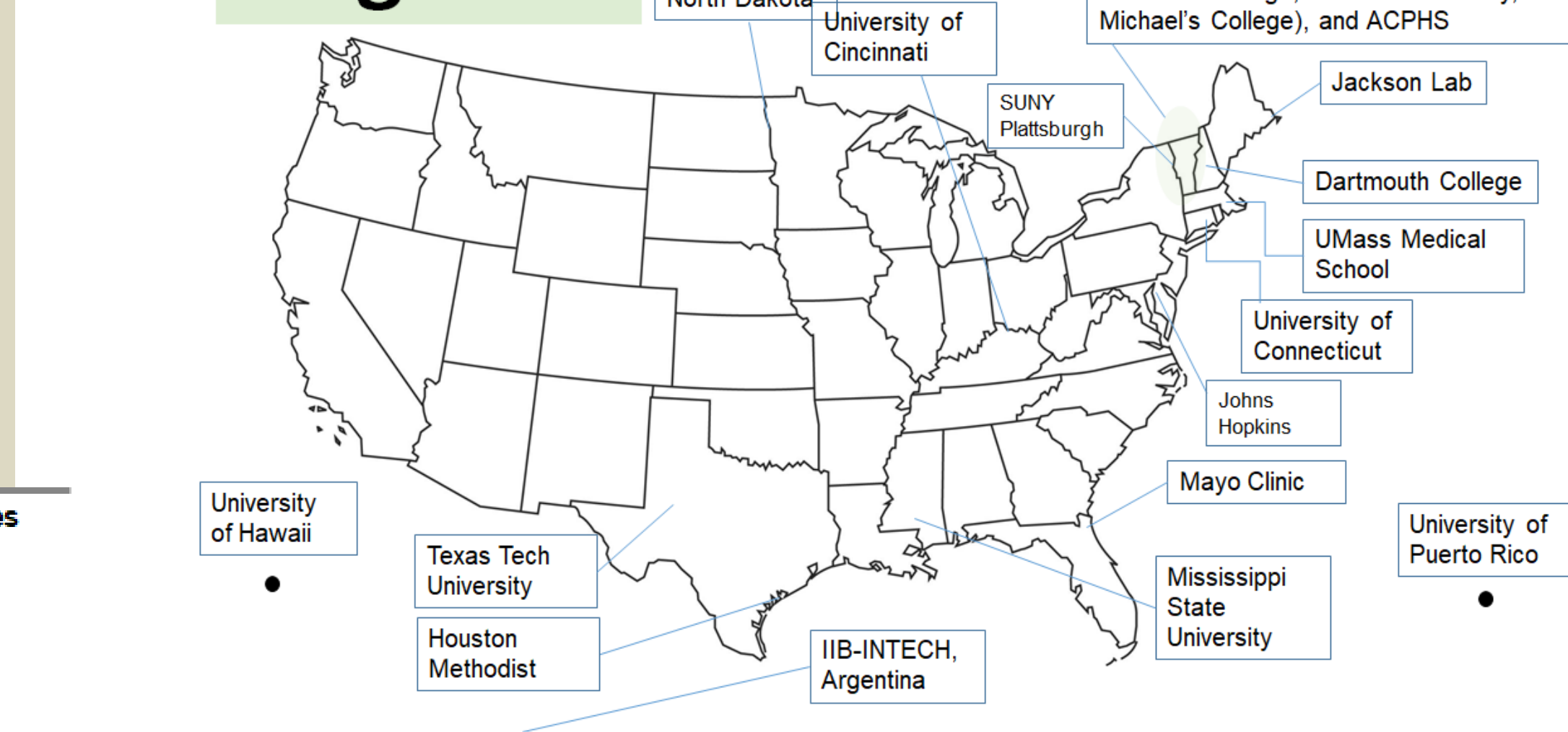
Hydrogen deuterium exchange workflow station, HDx-3 PAL



User Bases



Regional



Facility

Marsh Life Sciences (MLS) 335
<https://vbrn.org/proteomics/>

