

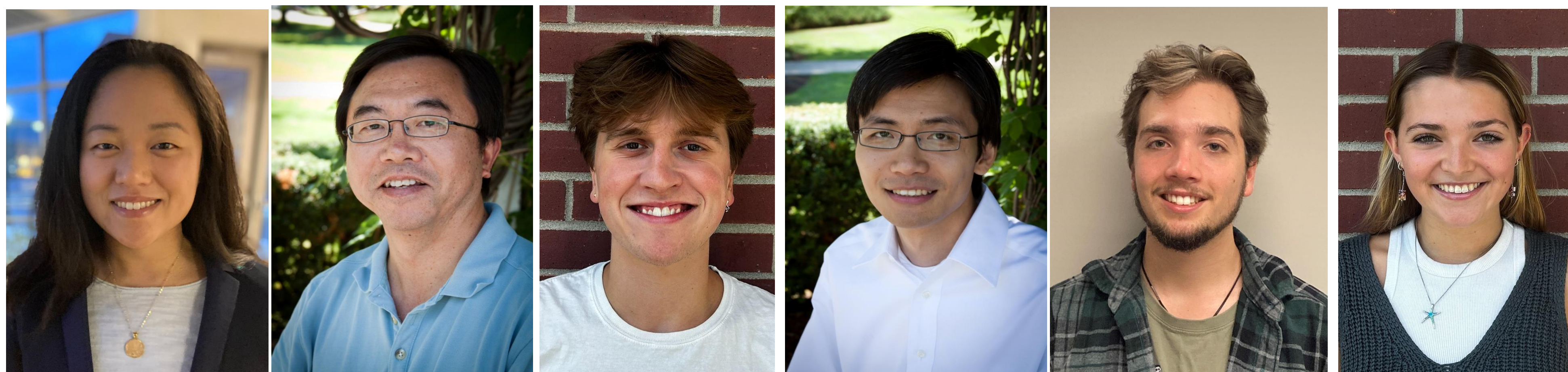
Mission

Establish a central resource of proteomics technologies

Establish a highly efficient **research** and **educational** environment

Cohn-Guthrie, Sydney
Sydney.Cohn-Guthrie@uvm.edu
Deng, Bin
bdeng@uvm.edu
Evans, Osmand
Osmand.Evans@uvm.edu

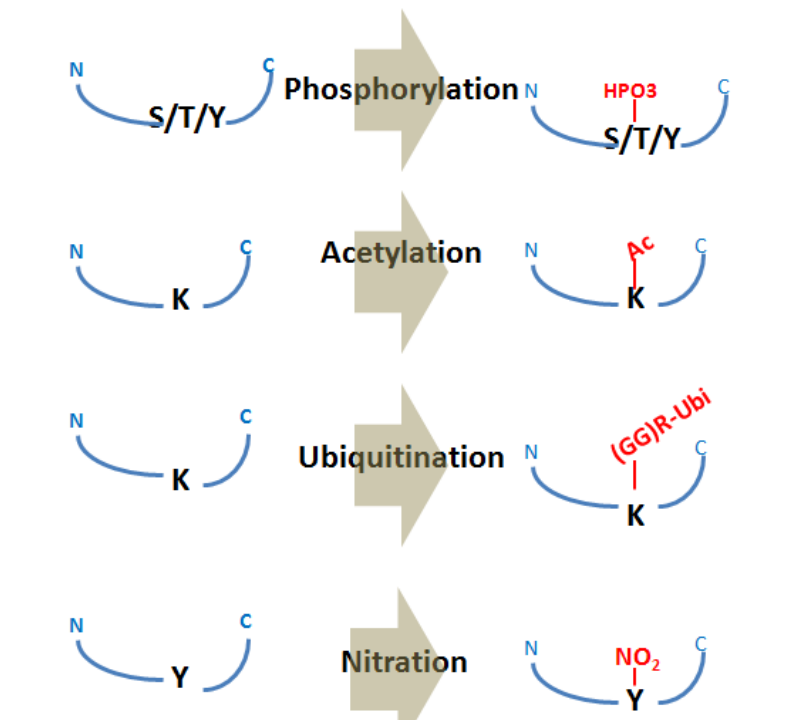
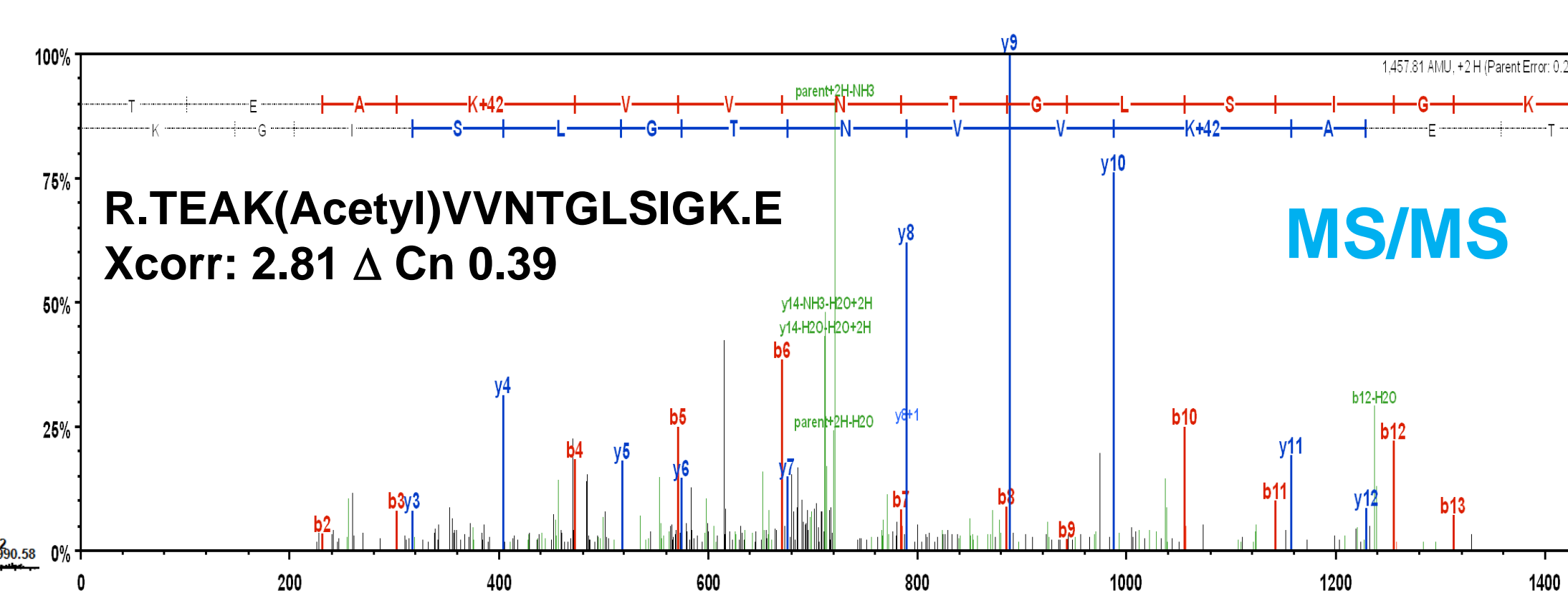
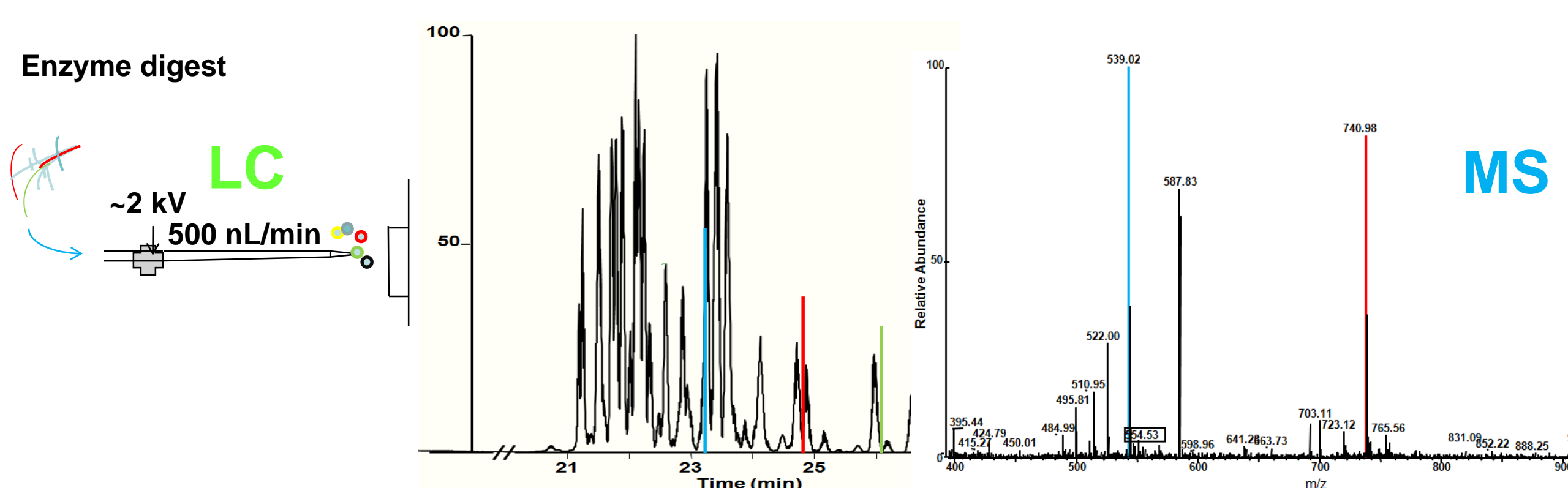
Lam, Wai
ylam@uvm.edu
Leon, Lucas
Lucas.Leon@uvm.edu
Pearson, Charlotte
Charlotte.Pearson@uvm.edu



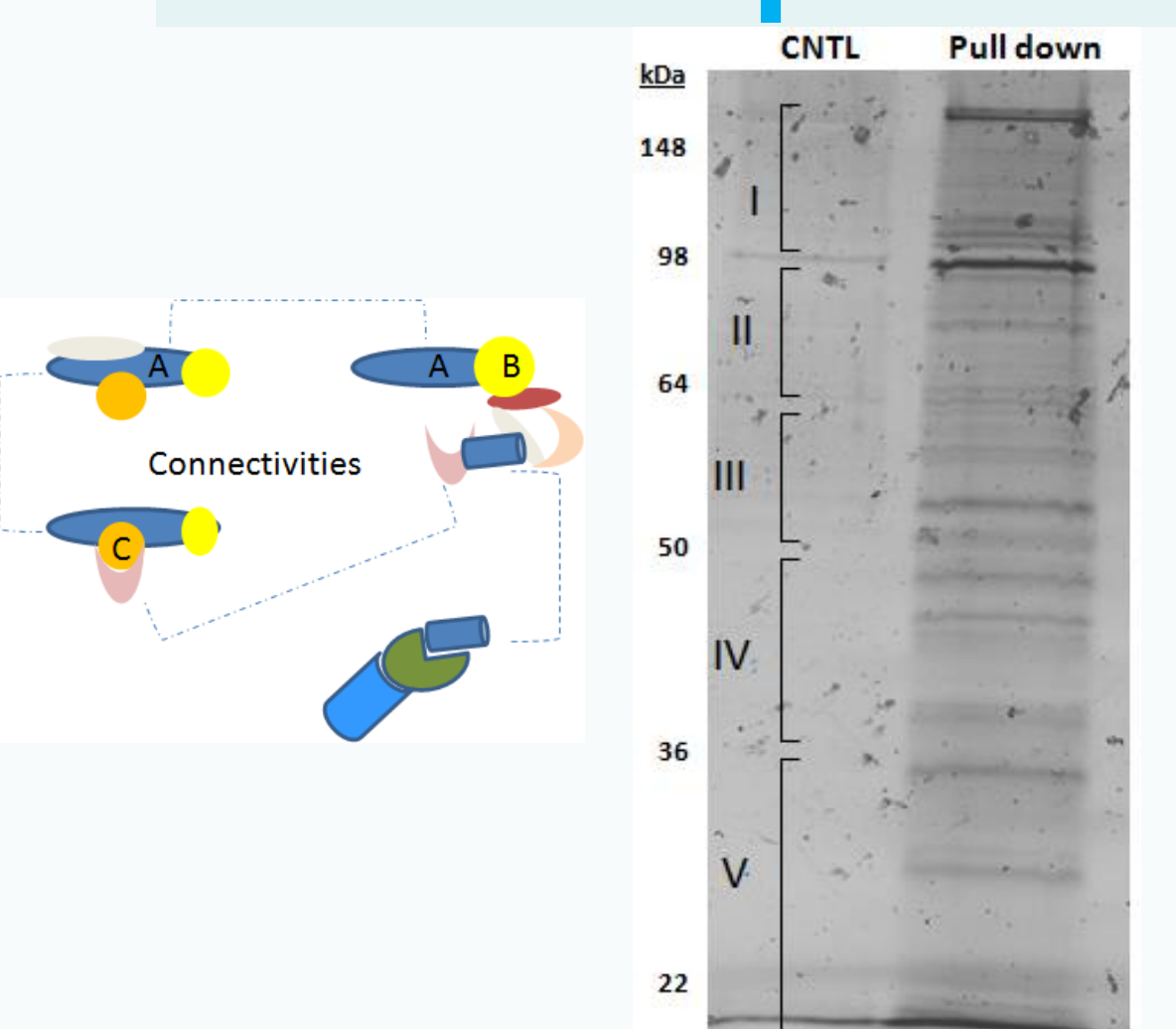
Expertise

Protein identification

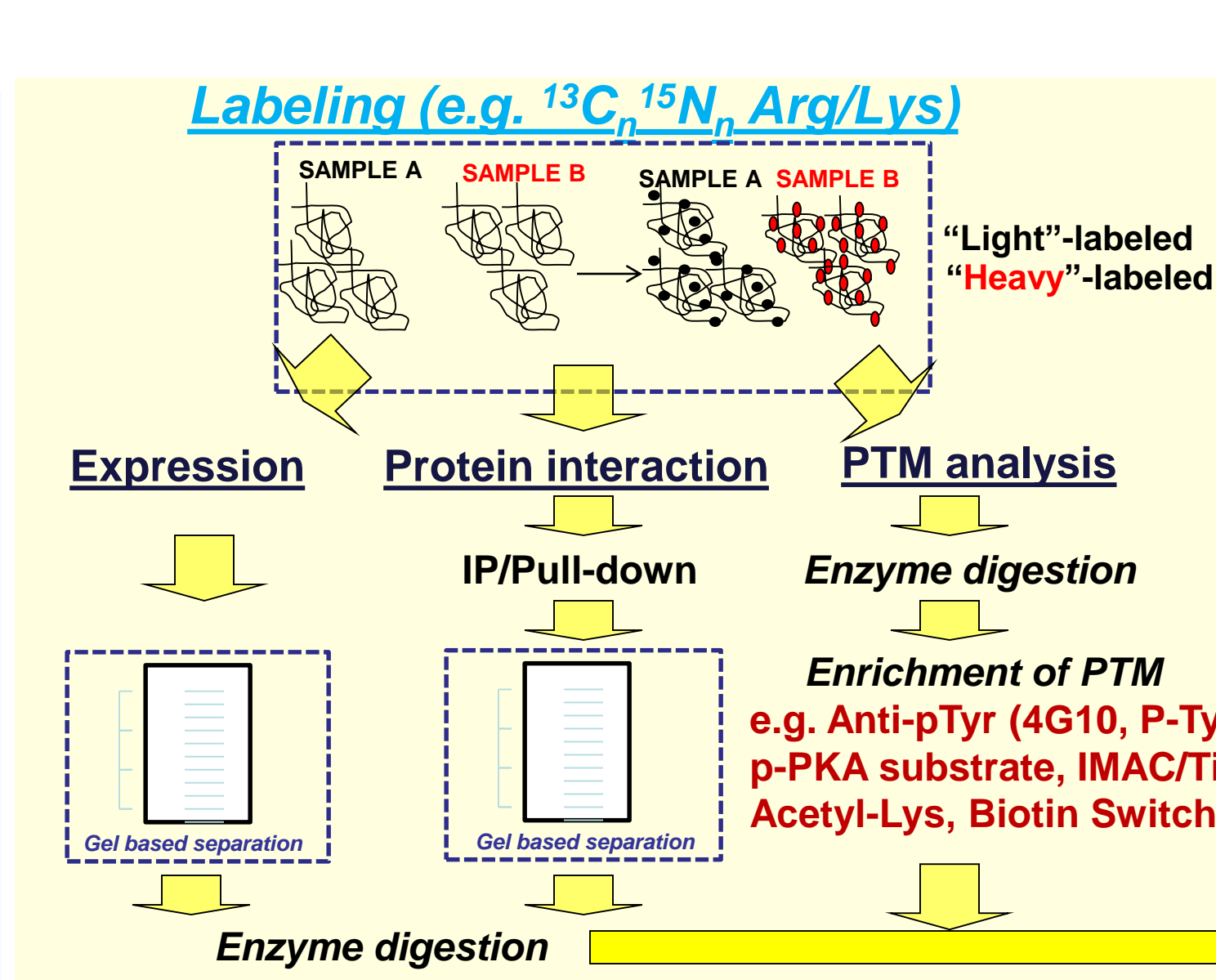
Post-translational modification analysis



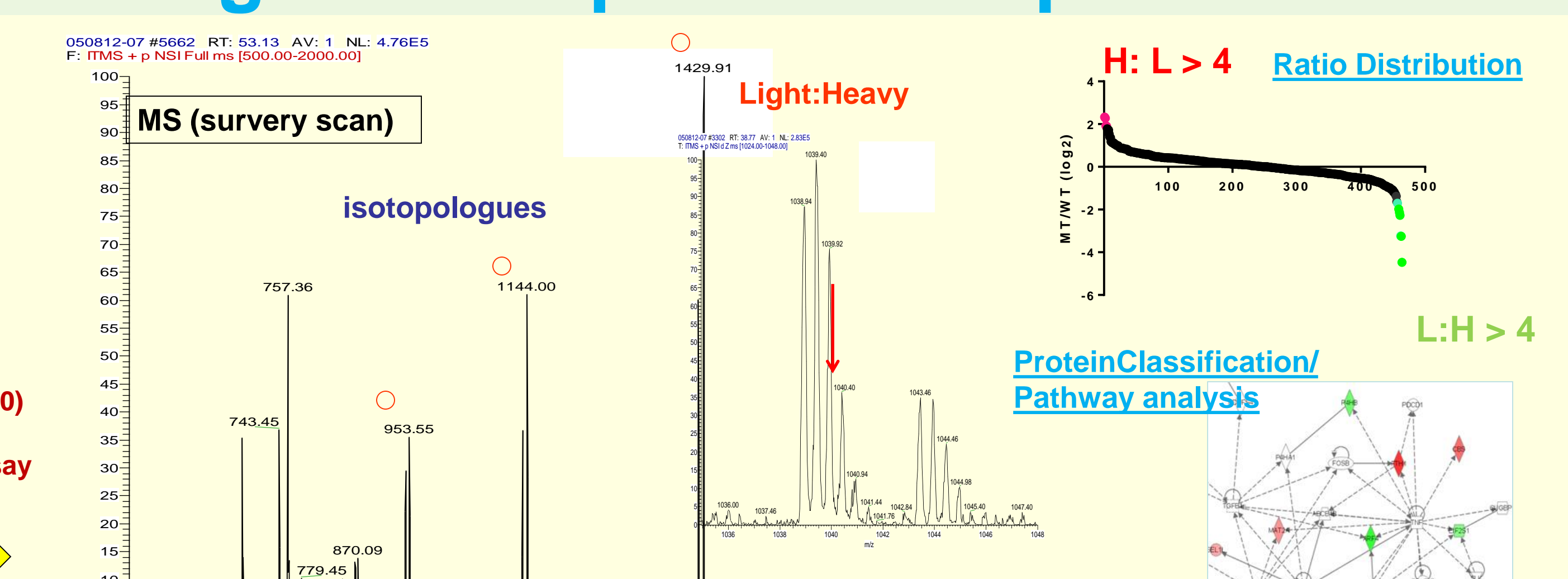
Protein-protein interaction



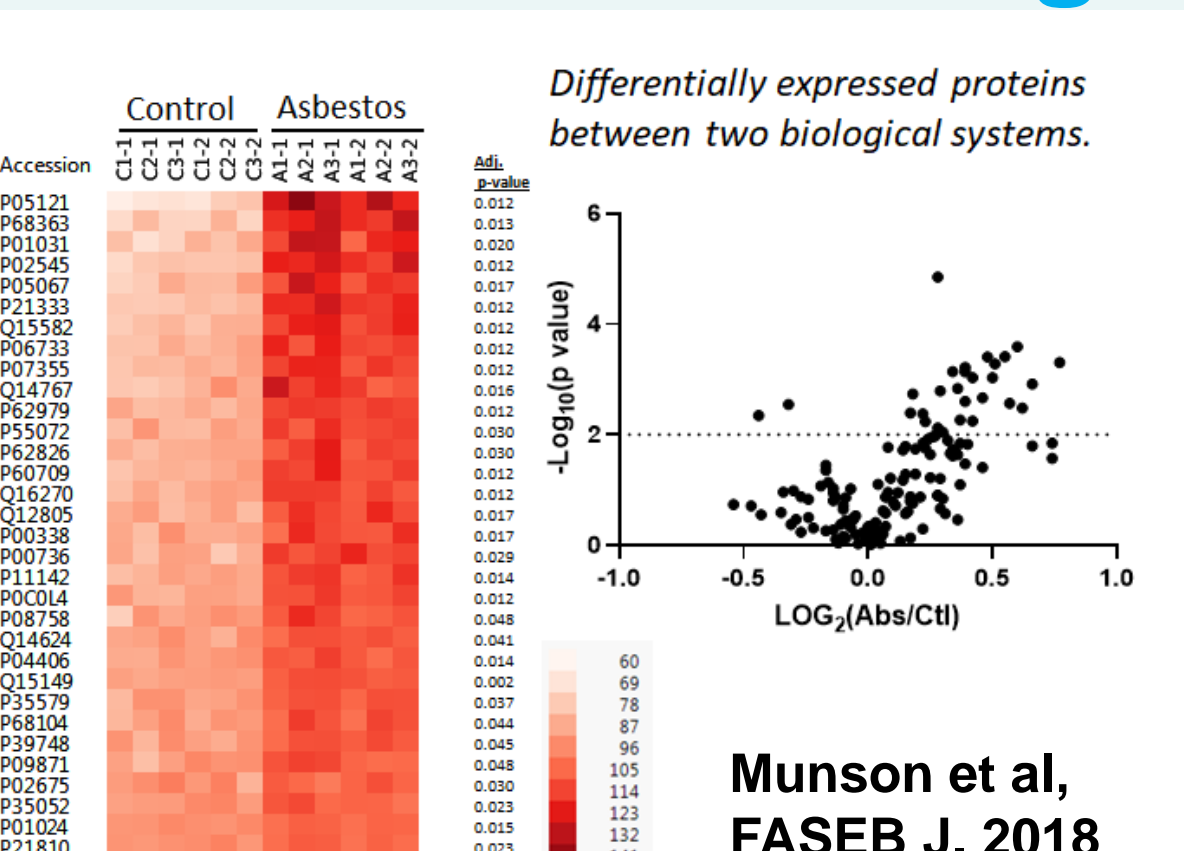
#	Protein Name	Accession No.	Molecular Weight (kDa)	Protein Count	Biological Process
1	Keratin, type I cytoskeletal 1	SP100203227	66.0	126	1063
2	Keratin, type I cytoskeletal 10	SP10009865	59.0	25	29
3	Keratin, type I cytoskeletal 9	SP10015159	62.0	182	288
4	Keratin, type II cytoskeletal 2 epL	SP100021304	66.0	10	23
5	SP100000000T01 SWISS-PROT... SP100000000		62.0	8	10
6	60 kDa heat shock protein, mito...	SP100178154	61.0	1	1
7	Keratin, type II cytoskeletal 5	SP10009867	62.0	2	11
8	Keratin, type II cytoskeletal 75	SP10009859	60.0	2	11
9	Uncharacterized protein	SP10002434	72.0	1	1
10	SESPINE 1 mRNA binding protein...	SP10041693	51.0	1	1
11	Sialomucin 1 of Pyrospira...	SP10020944	58.0	1	1
12	T-complex protein 1 subunit beta	SP10027779	57.0	1	1
13	Keratin, type I cytoskeletal 24	SP10004550	55.0	1	1
14	Hemerythrin	SP10029825	282.0	1	1
15	Keratin, type II cytoskeletal 68	SP10029365	60.0	1	1
16	Glucose-6-phosphate isomerase	SP10027497	63.0	1	1
17	T-complex protein 1 subunit alpha	SP10018665	59.0	1	1
18	Uncharacterized protein	SP10016478	37.0	1	1
19	T-complex protein 1 subunit delta	SP10020227	58.0	1	1
20	T-complex protein 1 subunit epsilon	SP10010720	60.0	1	1
21	Keratin, type I cytoskeletal 16	SP10021793	51.0	1	1



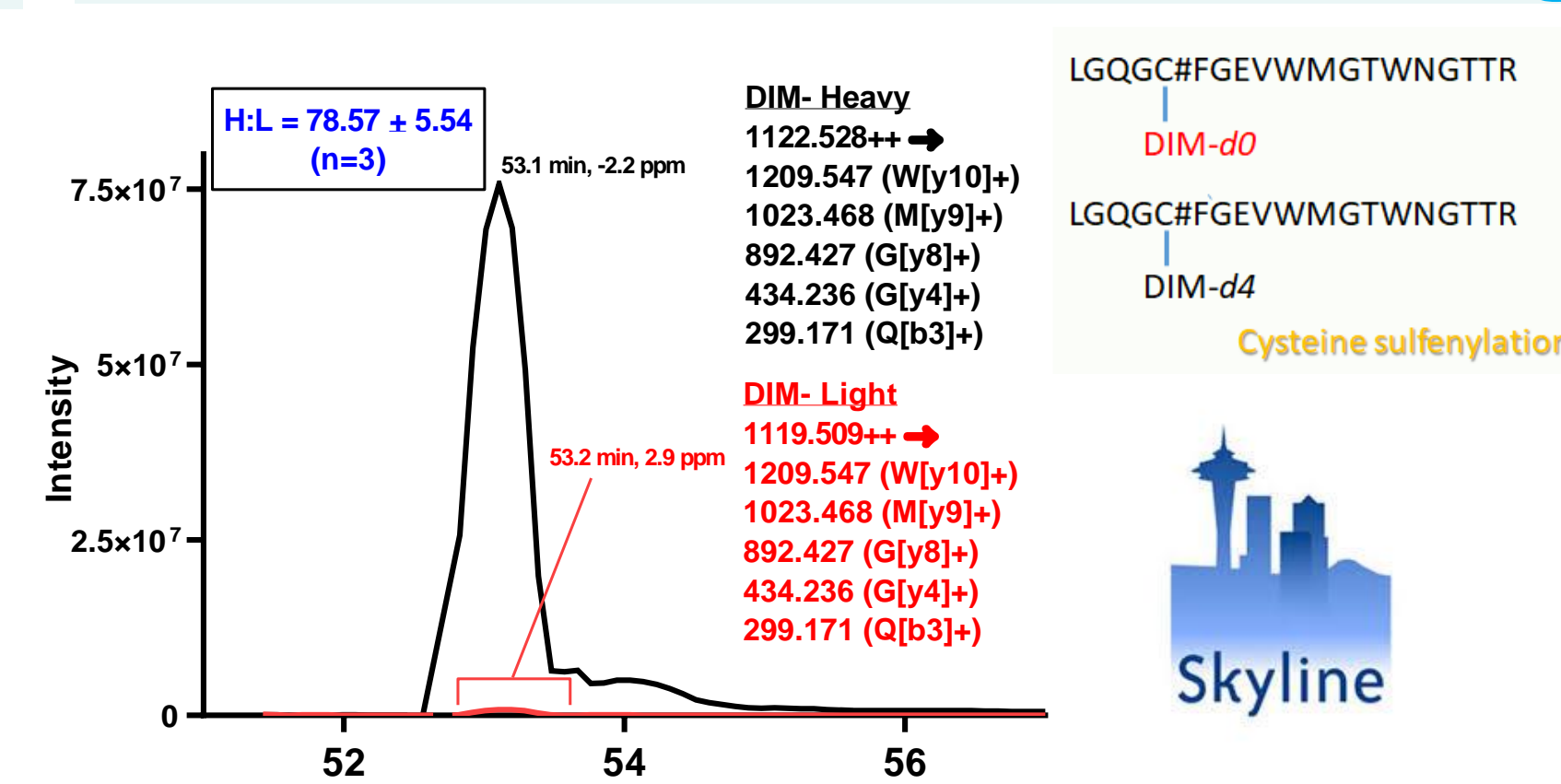
Large-scale quantitative proteomics



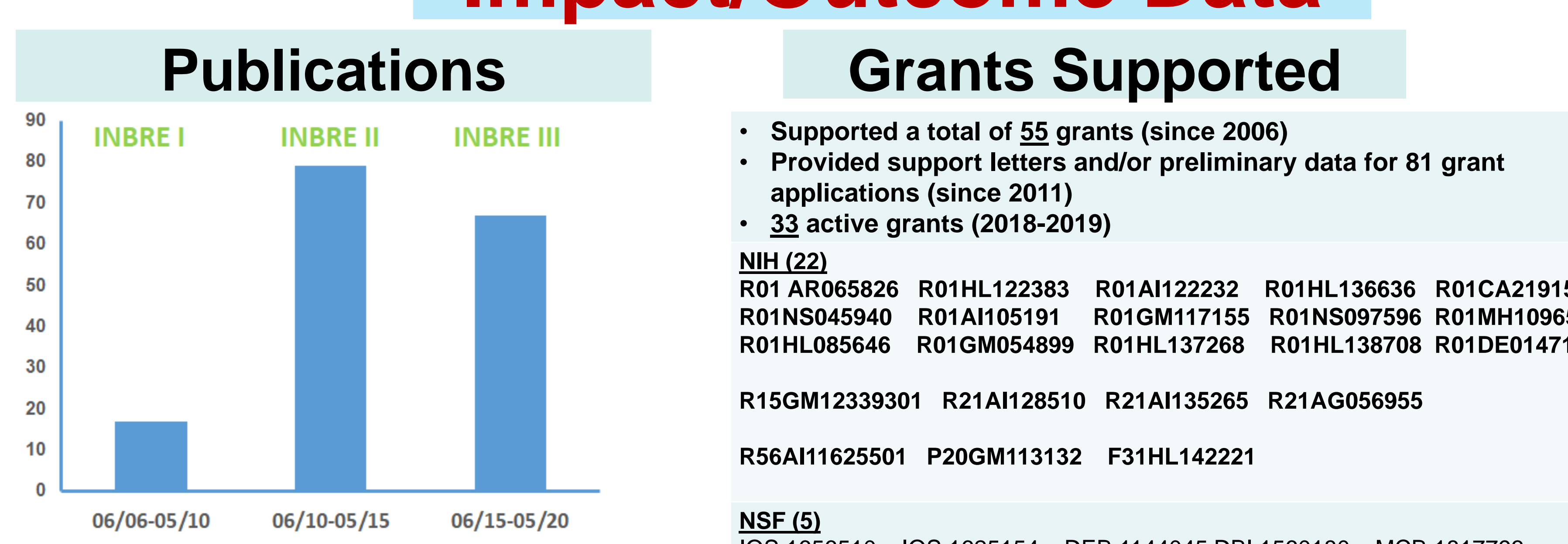
Tandem Mass Tags



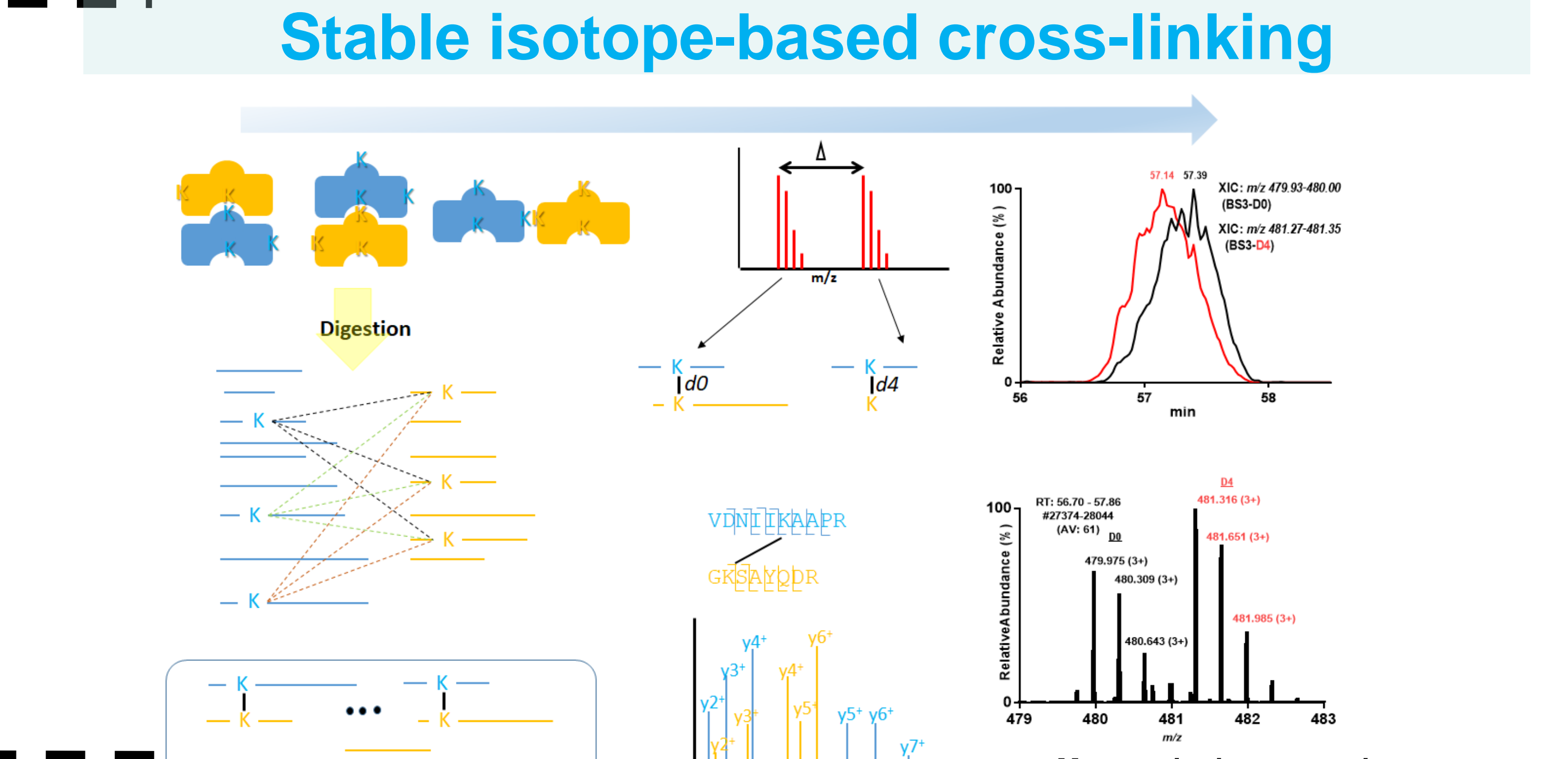
Parallel Reaction Monitoring



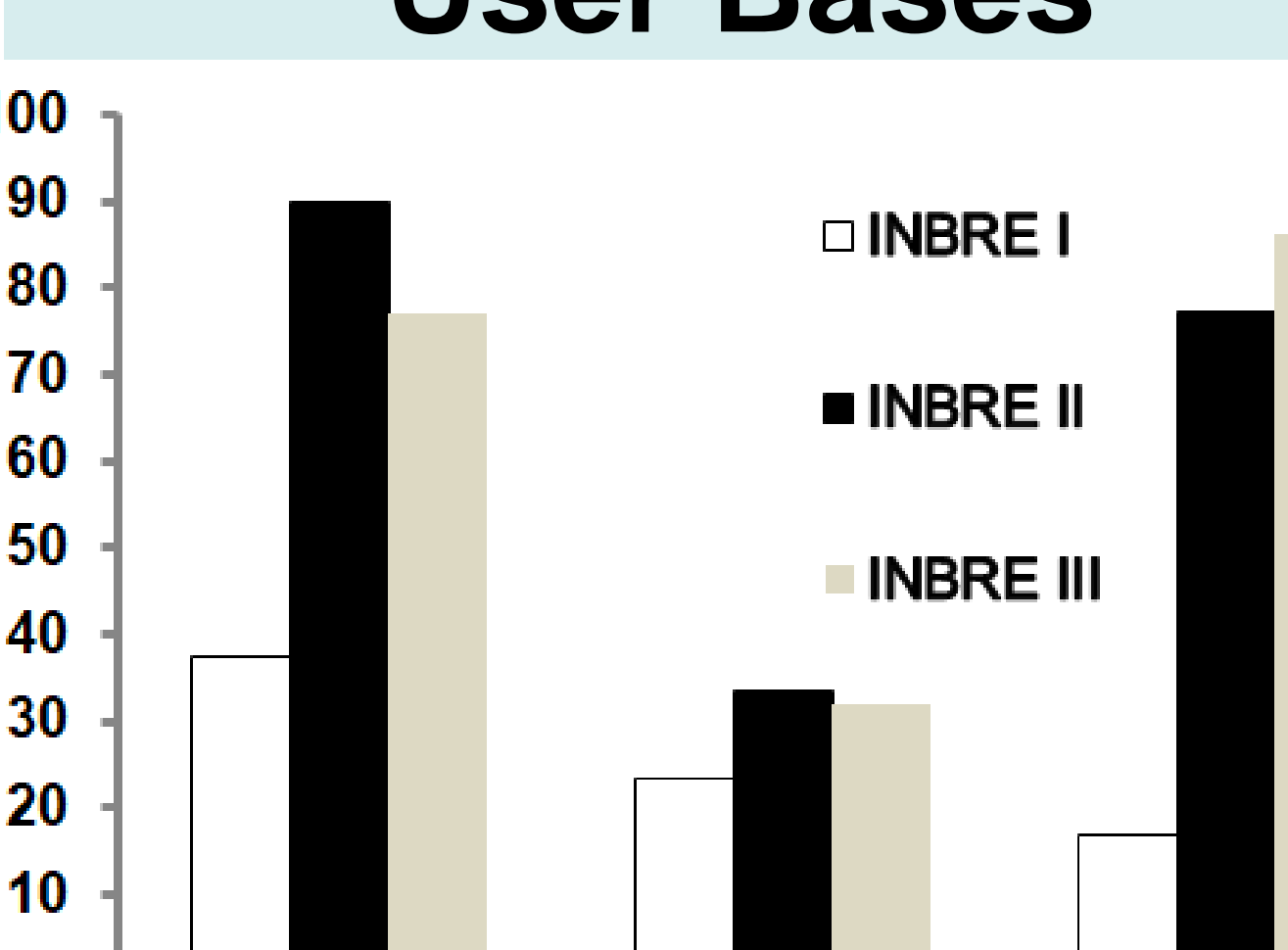
Impact/Outcome Data



Structural proteomics



User Bases



Facility Firestone Medical Research Building 143

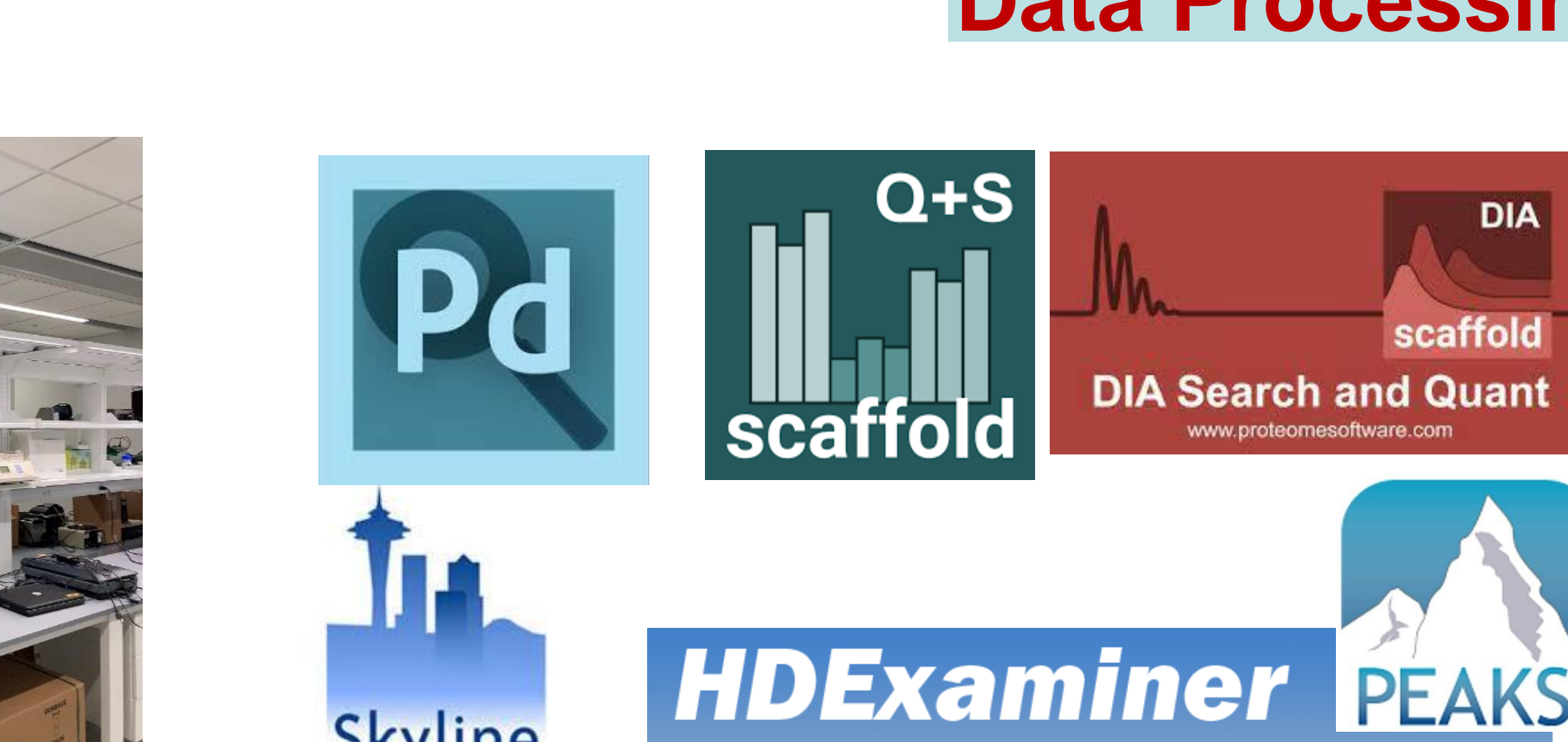
<https://vbrn.org/proteomics/>

Hydrogen deuterium exchange workflow station, HDx-3 PAL

Eclipse Exploris 240



Data Analysis



Acknowledgment. Support of the Vermont Biomedical Research Network is through grant 8P20GM103449 from the INBRE Program Institutional Development Award (IDeA) from the NIGMS